

Sexual Health Clinic - Capacity Review

Cate Bannan, RN, BA, BScN
Manager, Sexual Health

Joanna Oliver, Hons. B.Sc., M.Sc.
Epidemiologist



Assessing Sexual Health Clinic Capacity

- Agenda
 - Background
 - Clinic Characteristics
 - Halton Demographics
 - Clinic Utilization Projections
 - Where We Are Now

Assessing Sexual Health Clinic Capacity

- Background
 - Program History
 - Current “Components”
 - South Halton Capacity Issues
 - Wait Times
 - Age

Assessing Sexual Health Clinic Capacity

- Background con't
 - Purpose of Capacity Review
 - Explore Client Demographics
 - Identify Trends
 - Make recommendations for Organization and Growth

Assessing Sexual Health Clinic Capacity

- Background con't
 - Currently structured to comply with the Mandatory Guidelines, MOHLTC
 - 25.75 hrs of combined clinic services per week
 - Range of services
 - Involvement with health promotion activities, STI Case Management and Needle Exchange

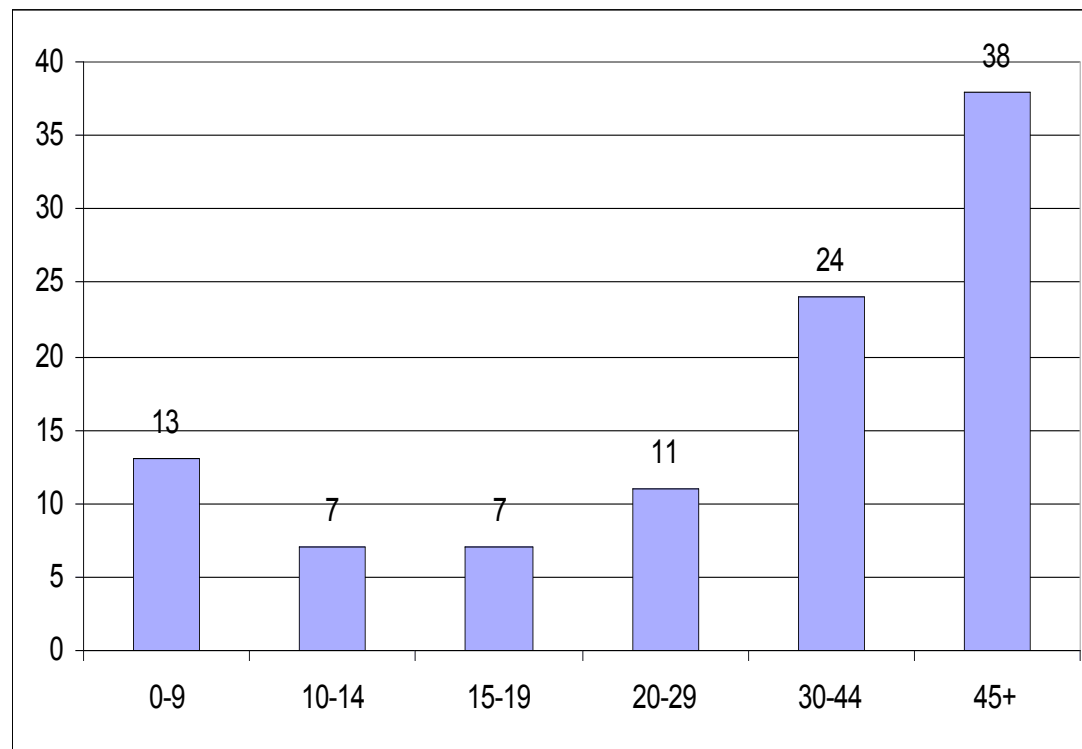
Assessing Sexual Health Clinic Capacity

- Clinic Characteristics
 - Lakeside
 - Acton
 - Georgetown
 - Milton

Halton Region

- 2006 Census population estimated at 439,256
 - 17.1% growth over 2001
- Projected to grow by 12.8% by 2012 and 21% by 2016
 - Milton has the greatest projected growth – 127.6% by 2016
 - Oakville projected growth for 2016 = 47.2%

Halton Demographics – by Age



Halton Sexual Health Clinics

- Four clinics:
 - Burlington (2006 pop'n: 164,415 + 165,615 Oakville)
 - Milton (2006 pop'n: 53,940)
 - Halton Hills (2006 pop'n: 55,298)*
 - Acton and Georgetown clinics

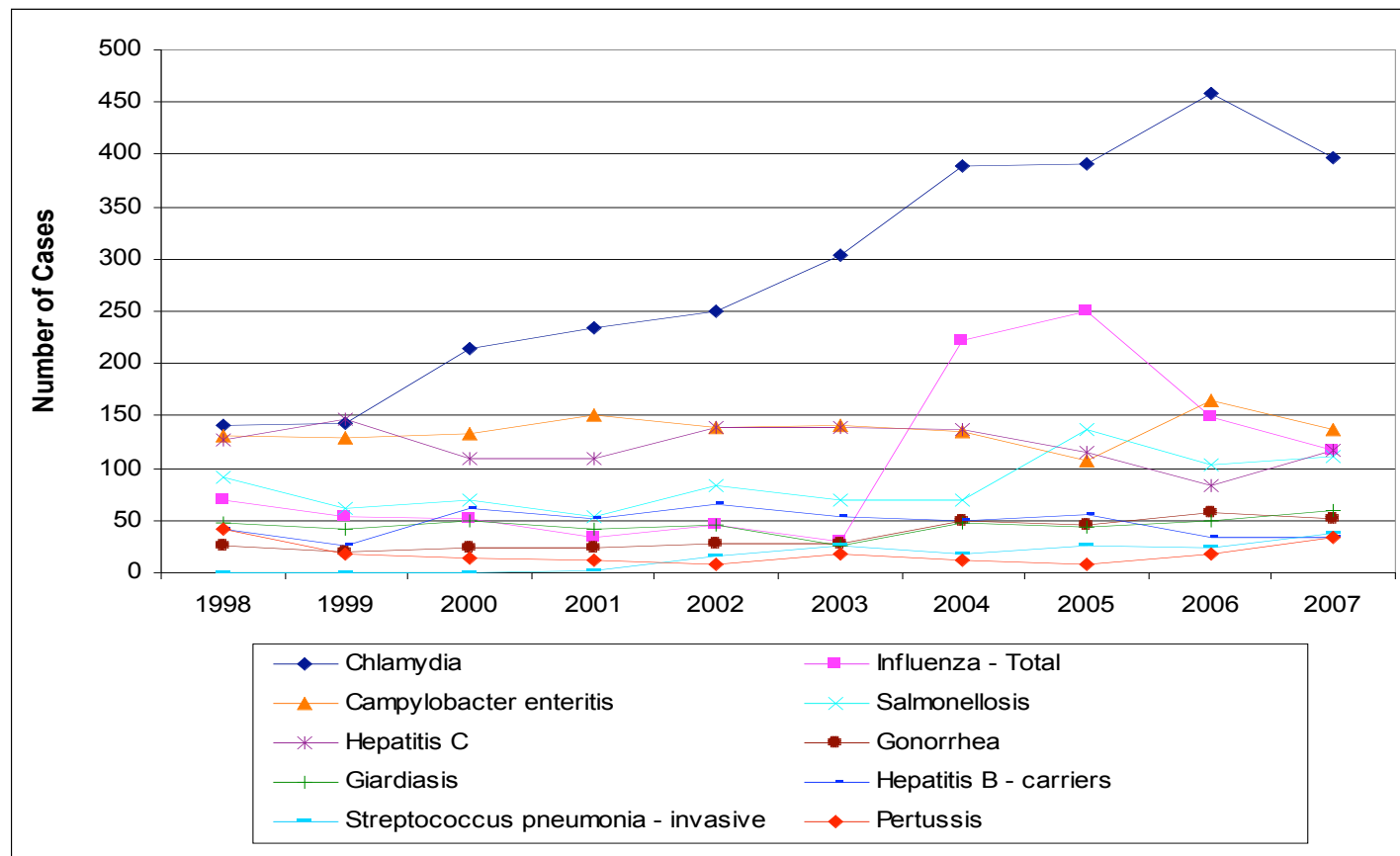
Understanding STIs in Halton

- STI Incidence in 2007
- STI Incidence over the previous 3-5 years
- SH Clinic Utilization
- Projecting incidence into the future – incidence rates, utilization rates, population projections, lit. % for youth

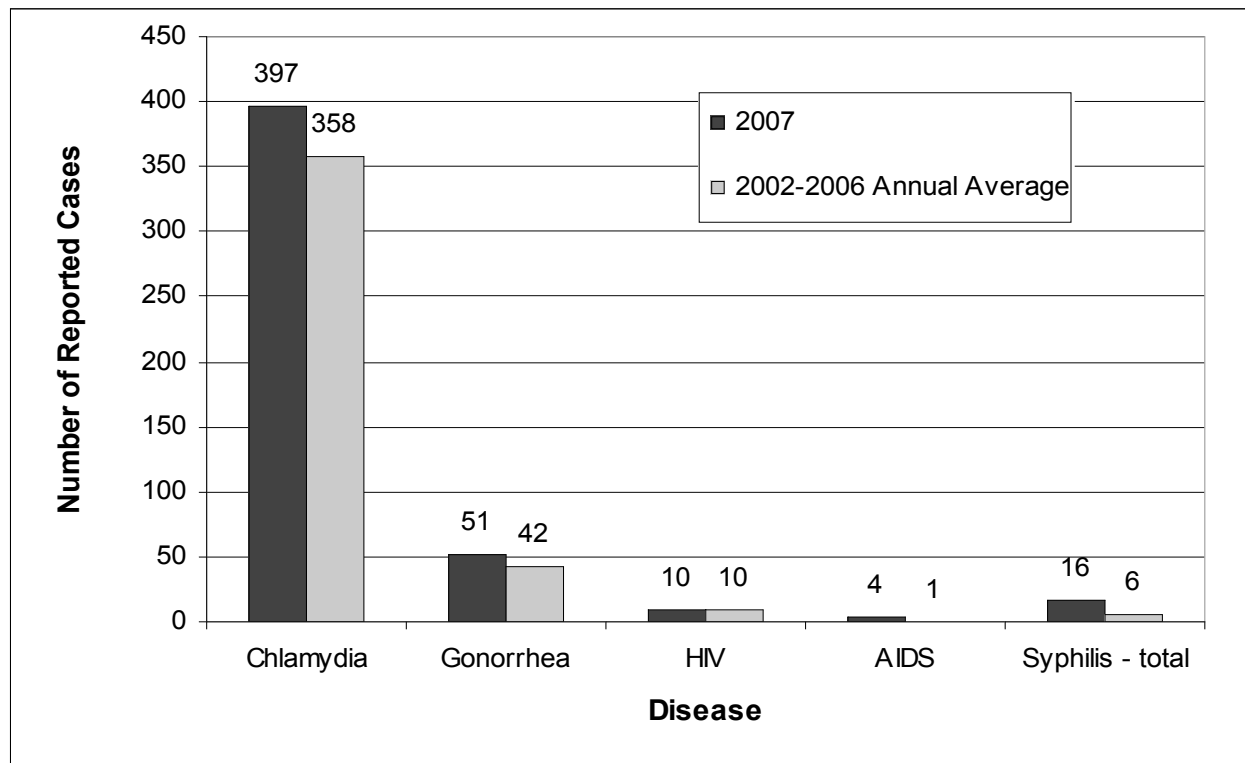
2007 STI Incidence in Halton

- 478 reported cases
 - 37% of the total cases of reported ID that year
 - Chlamydia and gonorrhoea in top 10 reported ID in Halton
 - 397 (83%) cases of chlamydia
 - 51 (11%) cases of gonorrhoea
 - 14 cases of HIV and AIDS (10, 4)
 - 16 cases of syphilis (7 infectious, 9 non-infectious)

Incidence of chlamydia in Halton, 1998–2007.



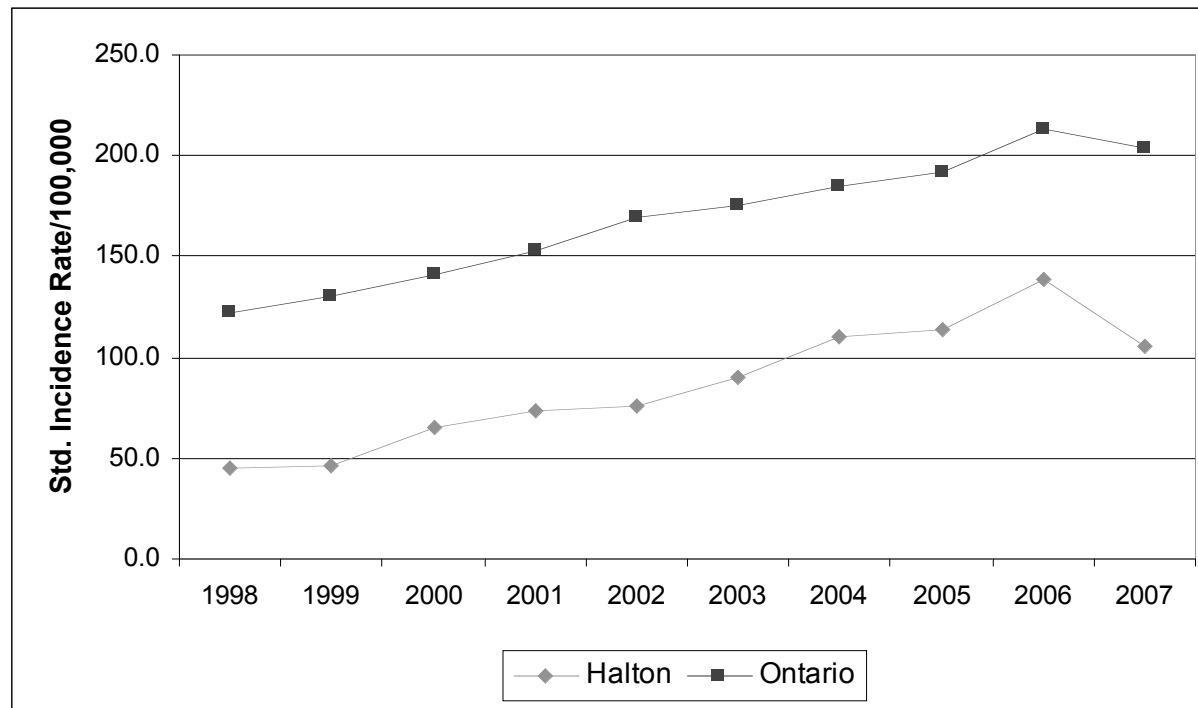
Sexually-transmitted infections, Halton Region, 2007 compared to previous five-year annual average



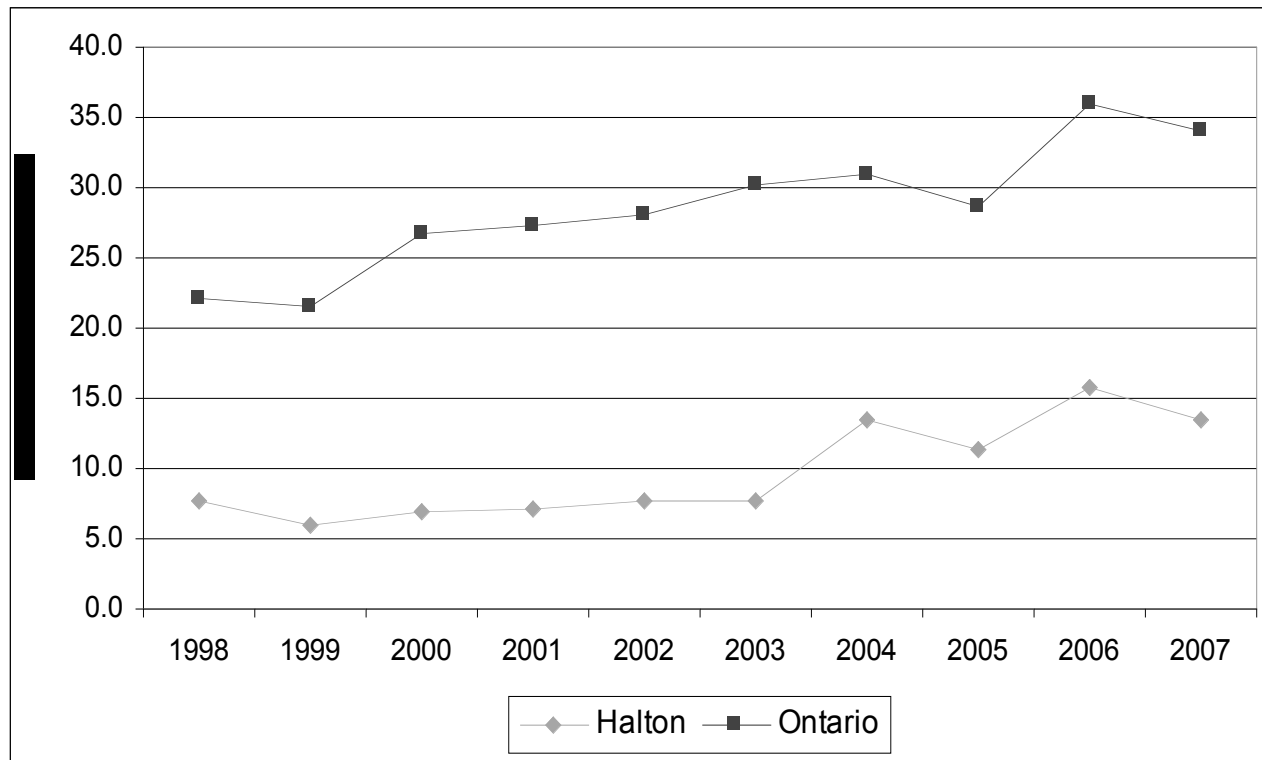
Top STIs in Halton compared to Ontario, 2007

Disease	HALTON 2007 Age-Standardized Incidence Rate per 100,000 (95% CI)	ONTARIO Age- Standardized Incidence Rate per 100,000 (95% CI)	Age- Standardized Incidence Ratio Percentage (95% CI)
Chlamydia	105.3 (94.7-115.8)	204.2 (201.5-206.8)	0.48 (0.43-0.53)
Gonorrhea	13.5 (9.7-17.2)	34.2 (33.1-35.2)	0.36 (0.26-0.46)

Chlamydia, age-standardized incidence rates per 100,000 population, Halton Region compared to Ontario, 1998-2007.



Gonorrhoea, age-standardized incidence rates per 100,000 population, Halton Region compared to Ontario, 1998-2007.



Sexual Health Clinic Utilization

- Siebel System
 - Clinic data entered by clinic staff
- Information available by:
 - Clinic location
 - Client's area of residence
 - Age groups: 10-14, 15-19, 20-24, 25-29, 30-44, 45+
 - Sex (Gender)
 - Number of visits = proxy for # of client
- Analyzed 5 years of data: 2003-2007

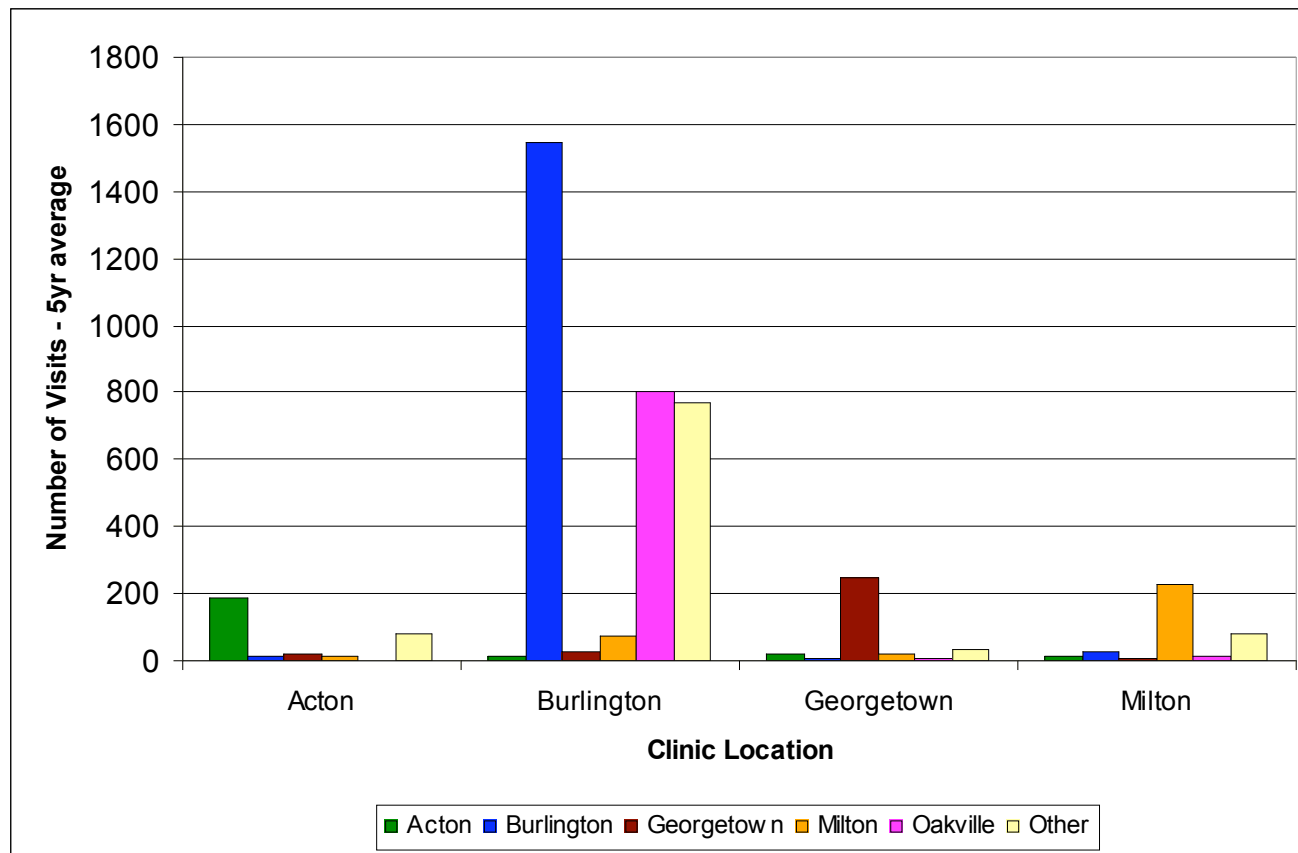
Sexual Health Clinic Utilization

- Primary Focus:
 - Sexual Health
 - Sexually Transmitted Infection
 - Not specified / Mental Health

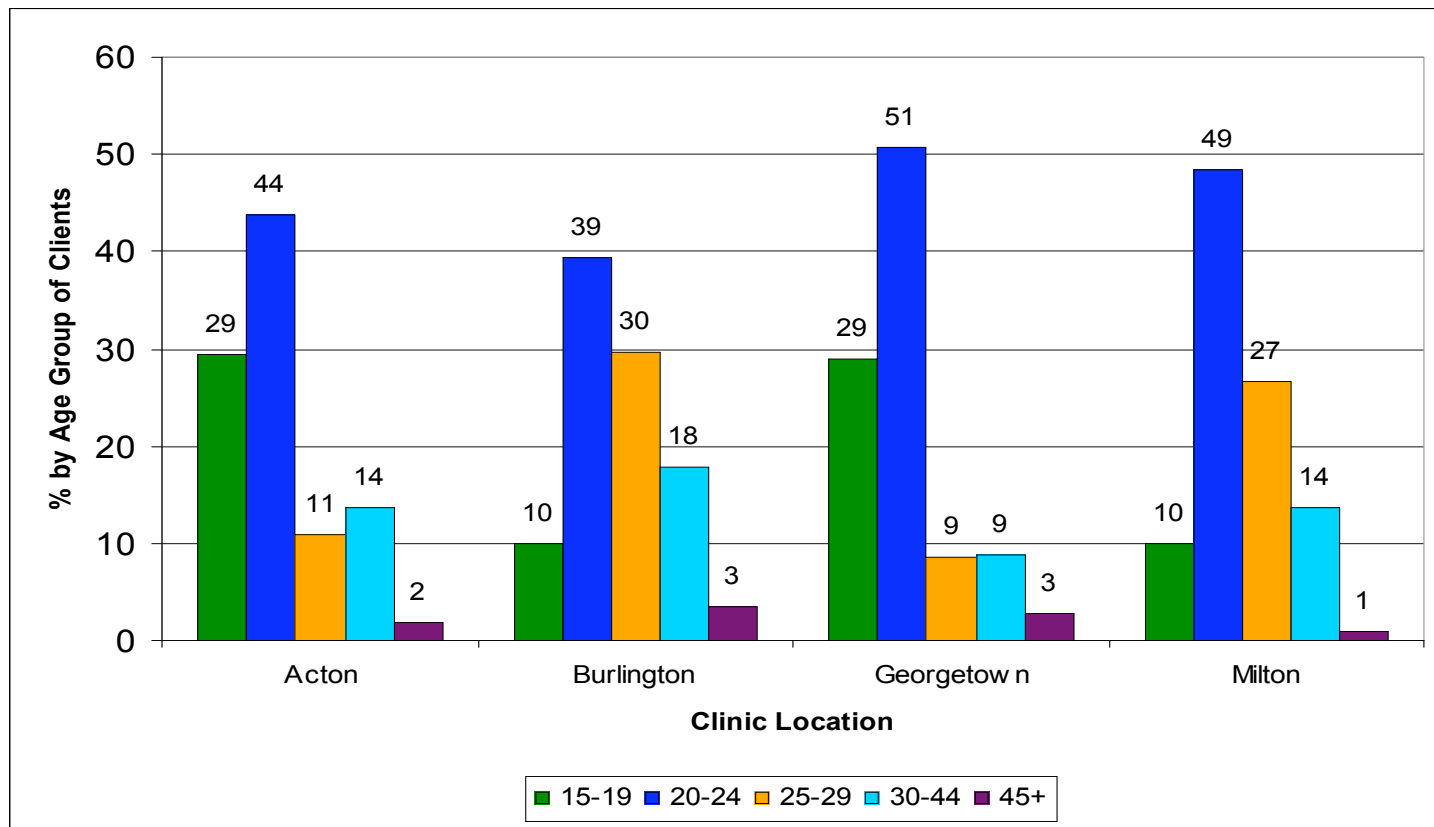
Sexual Health Clinic Utilization

- Sexual Health: contraceptives, pap and swab, post TA, pregnancy, sexual assault, test results
- Sexually Transmitted Infections: all STIs, HIV pre and post, HPV, Hepatitis, Molluscum, test results, vaginal infections

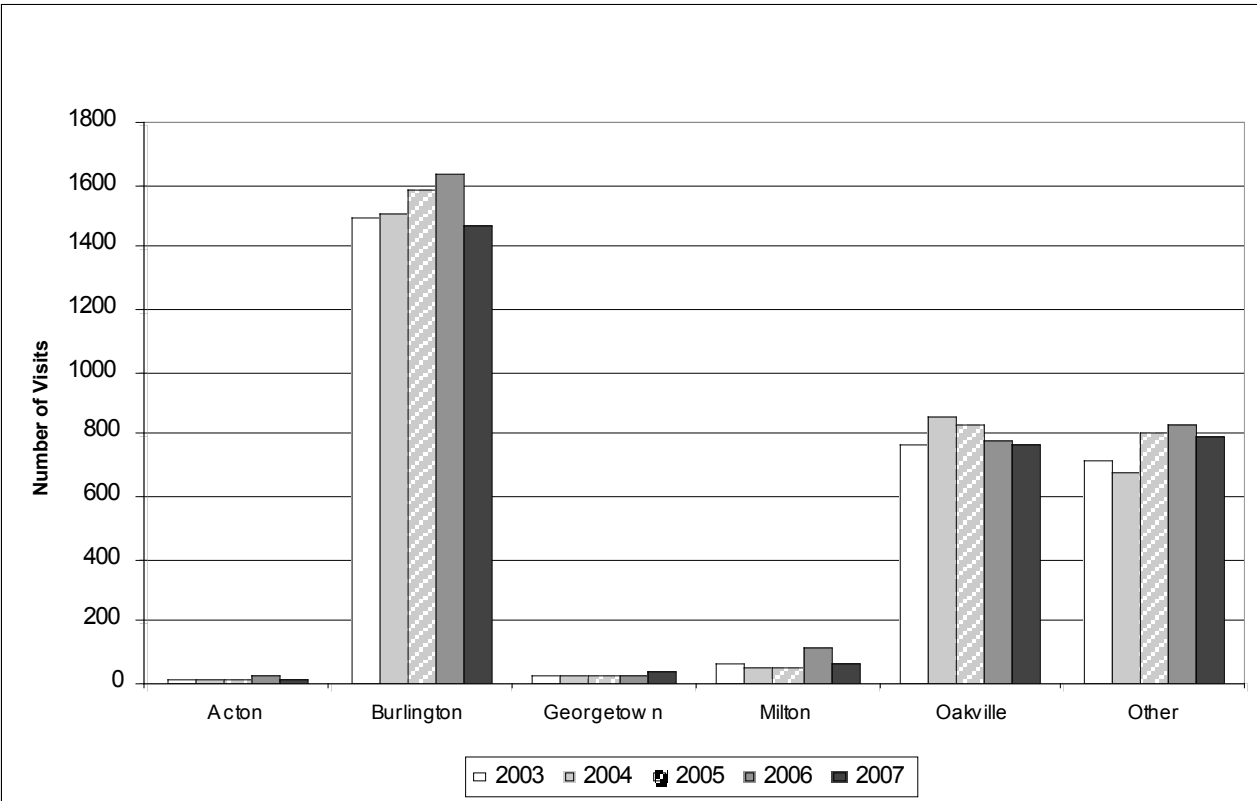
Clinic Review – by Client Residence (2003-2007)



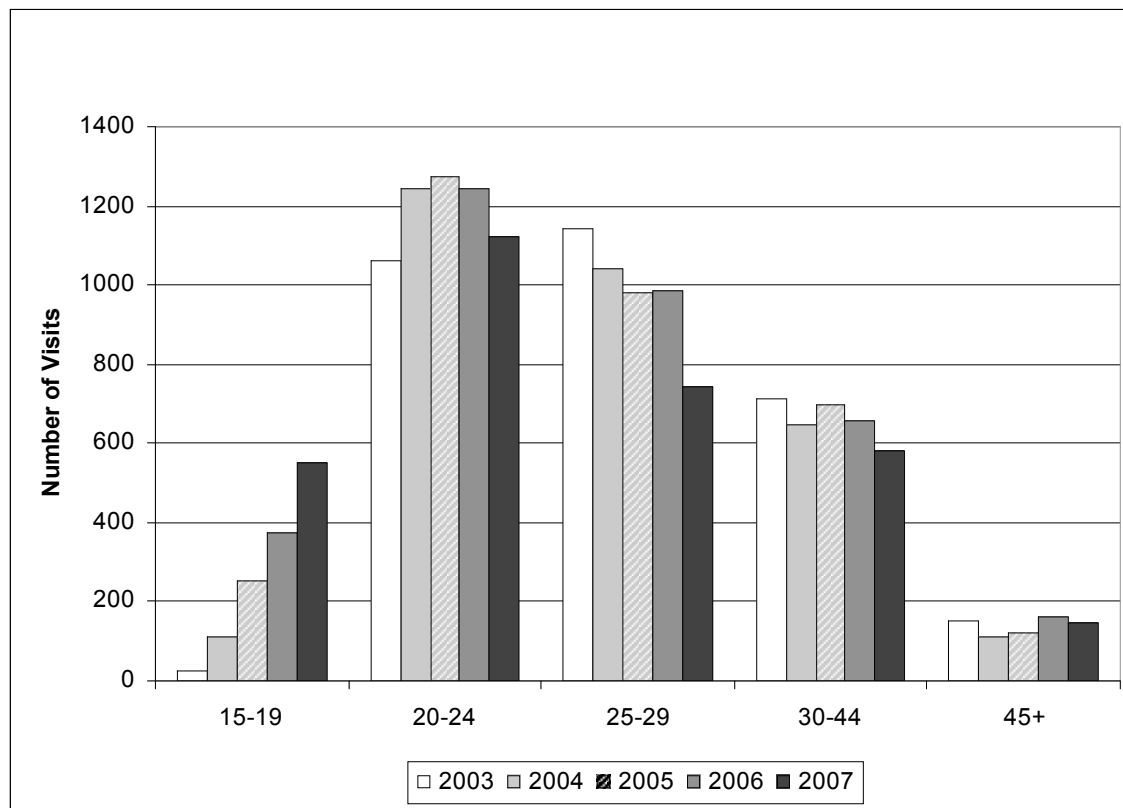
Clinic Review – by Clients' Age Group (2003-2007)



Burlington Clinic Review – by Client Residence



Burlington Clinic Review – by Age Group



Clinic Review – Targets being met

- The Acton and Georgetown clinics appear to be meeting the target of serving and working with the 15-19 year old age group
 - The high schools in these areas have active consumers of sexual health and STI education and promotion activities

Clinic Review – Targets not being met

- The Milton and Burlington clinics are below this target
 - Large number of high schools in this combined area, but limited staff resources for promotional activities
 - Existing boundaries in the Catholic school system which define the scope of permitted sexual health and STI education and promotional activities
 - Burlington clinic not easily accessed by Oakville clients due to underdeveloped public transit system between these two cities

Projecting for the Future - Methods

- Halton Region Population Demographics
- Halton Region School Board Population Estimates
- Literature review re: sexual activity and youth
- Incidence Rates – iPHIS
- Utilization Rates – Halton Clinics

Projecting Total Clients – Method 1

- 3-yr avg. age-specific incidence rates (2005-2007 iPHIS data) applied to the 2012 population projections (Min. of Finance) for Halton Region
 - Halton Region total
 - By age group
- Results: Overall, 18% increase over 2007 actual and 15% increase over 3-yr avg

Projecting Number of Total Visits – Method 2

- Builds on Method 1
- % increase in number of cases applied to 3-yr utilization average (2005-2007 clinic data)
 - extended to 2012
 - For all Halton Region clinics
 - For each clinic
- Results: 25% increase over 2007 actual visits

Projecting Number of Total Visits – Method 3

- Population projections for 2016 (HPDHC) were applied to 3-yr avg. utilization rates (2005-2007 clinic data)
 - extended to 2012
 - For all Halton Region clinics
 - For each clinic

	Projected # Females	Projected # Males	Projected Total	2007		% change	
				Actual	3-year average	Actual	3-year average
Method 1							
Total projected number of incident cases in Halton	318	226	544	461	471	18%	15%
Method 2							
Projected number of clinic visits in Halton	4,314	837	5,151	4,122	4,365	25%	-
Method 3							
Projected number of clinic visits in Halton	3,982	776	4,758	4,122	4,365	15%	9%

Projecting at-risk Youth Population – Method 1

- Used populations estimates and projections
- Applied 28% estimate of ‘at-risk’ youth (“Early sexual intercourse, condom use and sexually transmitted diseases”. The Daily. May 3, 2005, Statistics Canada) to population estimates & projections
- Results:
 - 10.5% of ‘at-risk’ youth 15-19 was served in 2007
 - 6.4% of ‘at-risk’ young adults 20-24 was served in 2007

Projecting at-risk Youth Population – Method 2

- Used School Board enrolment estimates for school year 2006/07 and 2007/08 (one Board's estimates not available)
- 1. Applied the 28% estimate ("Early sexual intercourse, condom use and sexually transmitted diseases". The Daily. May 3, 2005, Statistics Canada) **to all Grades**
 - Estimates of youth who had sexual intercourse at least once

Method 2...cont'd (2)

2. Applied estimates for Grades 9 and 11

(Boyce et al., "Canadian Youth, Sexual Health and HIV/AIDS Study: Factors Influencing Knowledge, Attitudes and Behaviours", 2003)

- Estimates of Gr. 9 and 11 youth who had sexual intercourse at least once

Assumptions:

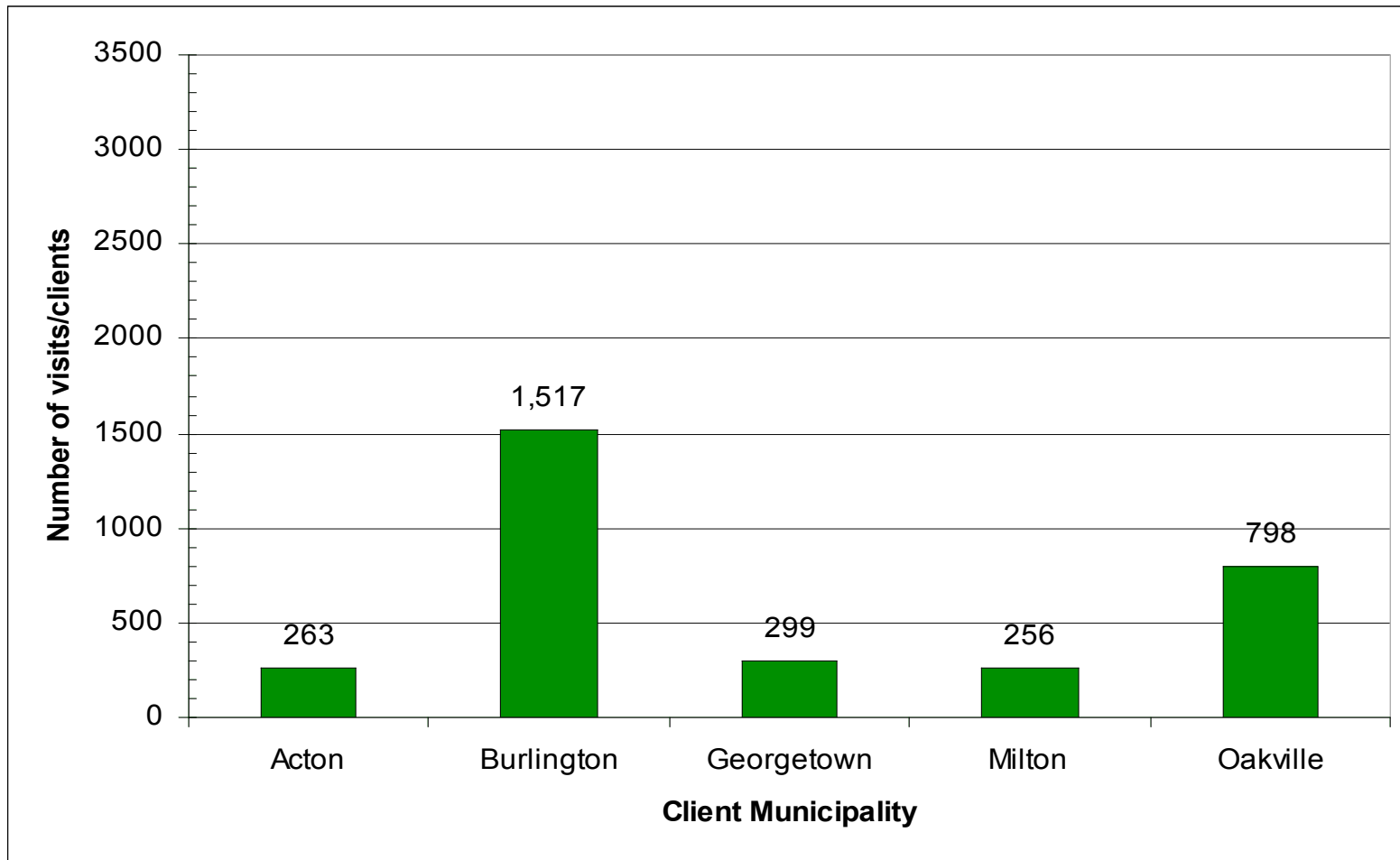
- Gr. 9 and 11 estimates are average of study's sex-specific estimates
- Gr. 10 estimate was calculated based on difference between Gr. 9 and 11
- Gr. 12 estimate would be same as Gr. 11 estimate

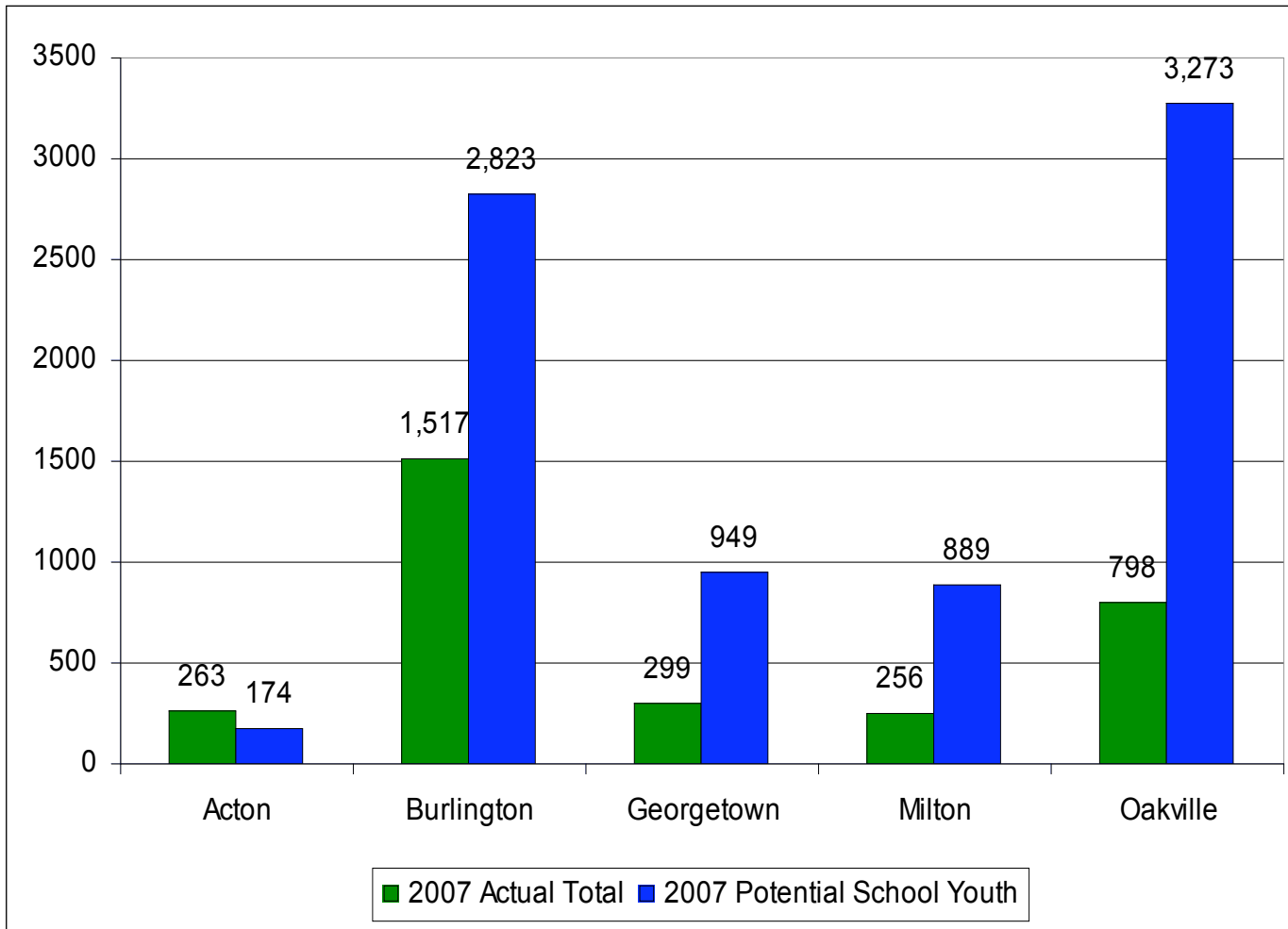
Method 2...cont'd (3)

- Averaged both estimates
- Applied % municipality-specific change in enrolment from 2006/07 to 2007/08 to schools with no 2007/08 enrolment data
- Estimated municipality-specific potential school-aged clients

Projections of Potential Secondary School-Aged Youth, Halton Region, 2007.

Client Municipality	Total Actual # of visits (proxy for # of clients)	Potential # of school-aged clients
Acton	263	174
Burlington	1,517	2,823
Georgetown	299	949
Milton	256	889
Oakville	798	3,273





Assessing Sexual Health Clinic Capacity

- Recommendations
 - Explore possibility of opening site in Oakville
 - Increase promotional services to target population
 - Explore Lakeside location options
 - Continue to monitor trends & issues

Assessing Sexual Health Clinic Capacity

- Where We Are Now